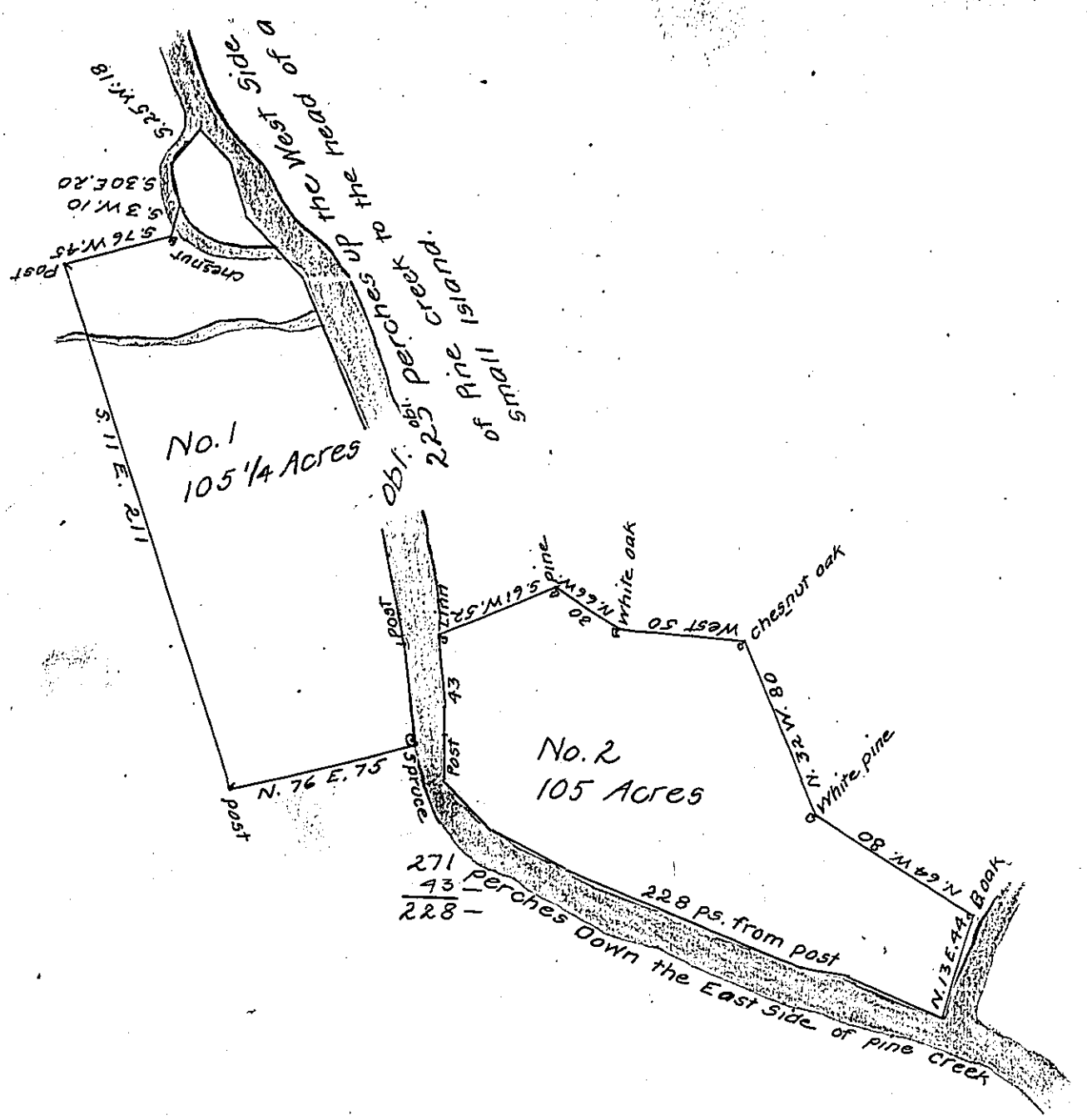


FORM NO. 1.



A Draught of a Tract of Land Situate at and above the first forks of Pine creek Originally Surveyed for Benjamin Walker on the 13th. day of June 1786 by virtue of two Warrants No. 1 by virtue of a Warrant No. 616 Dated the 6th. day of Sept. 1785 No. 2. by virtue of a Preemption Warrant dated the 20th. day of October 1785 and by a Special order from the bo. of Property dated the 9th. of July 1788 by virtue of the afforesaid Preemption Warrant, on the 12th. day of September 1788 resurveyed the above Described tract of Land containing two hundred and ten Acres and a quarter and Allowance.

Surveyed pr. Thomas Tucker D. Surveyor

To John Lukens Esqr. } by Judgement of Board  
 Surveyor General } of Property of the 5th. Jan. 1789

this Survey Ordered to be accepted & Patented on the Pre-emption Warrt of 20th. Oct. obl. '85

IN TESTIMONY that the above is a copy of the original remaining on file in the Department of Internal Affairs of Pennsylvania, made conformably to an Act of Assembly approved the 16th day of February 1833, I have hereunto set my hand and caused the Seal of said Department to be affixed at Harrisburg, this twenty-seventh day of April 1907

*Isaac B. Brown*  
 Secretary of Internal Affairs.